



Bordeaux



MÉDOC

ST. ESTÈPHE

PAUILLAC

ST. JULIEN

LISTRAC

MOULIS

MARGAUX

PESSAC-  
LÉOGNAN

POMEROL

ST. ÉMILION

ENTRE-  
DEUX-MERS

LOUPIAC

CÉRONS

BARSAC

SAUTERNES

STE-CROIX-  
DU-MONT



**BORDEAUX**

© Court of Master Sommeliers



# Background

- ✦ Largest AOP region in France.
- ✦ Over 111,000 ha. of vineyards.
- ✦ Approx. 700 million bottles of wine annually.
- ✦ 86% Red, 9% White, 4% Rosé 1% Sweet
- ✦ 65 appellations –6,000 producers –10,000 labels.
- ✦ 56% of Châteaux are family owned and above 20ha.
- ✦ Bordeaux Rouge and Bordeaux Supérieur account for 45% of total production.

# Terms

## ■ **Château:**

Estate under single ownership.

Size of the château varies with purchase or sale of vineyard.

Eg. Petrus has increased by 50% since 1969.

## ■ **Négociant:**

- An agent who purchases fruit or wine in barrel, then age it in their own cellars.

## ■ **En Primeur Sales:**

- Early release of unmaturing wines for sale.

# Climate and Soils

## Maritime climate

- ✦ Moderates temperatures.
- ✦ Increases vintage variability.
- ✦ Humidity and mould.

## Soils

- ✦ Médoc/Graves - gravel.
- ✦ St. Émilion - sand and gravel over limestone.
- ✦ Pomerol - iron pan under sand and clay.





Gravel soils at Château Latour



Marine fossil soils in the Graves



Gravel, Sand and Clay at Le Pin



Clay soil at Petrus

# Principal Red Grape Varieties

Cabernet Sauvignon	22.5%
Merlot	66%
Cabernet Franc	9.5%
Malbec (Cot)	2%
Petit Verdot	
Carménère (Grande Vidure)	

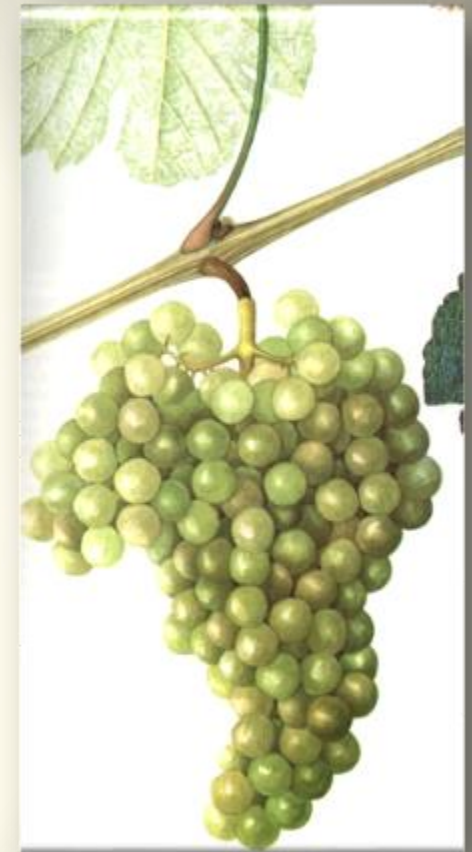


Additionally Touriga Nacional and 4 hybrid varieties are approved (up to 5% of plantings)

# Principal White Grape Varieties

For dry and sweet wines

Sauvignon Blanc	45%
Sémillon Blanc	47%
Muscadelle Blanc	5%
Sauvignon Gris Colombard Folle Blanche Ugni Blanc	3%



Additionally: Gros & Petit Manseng, Chardonnay, Viognier, Alvarinho and Chenin Blanc are approved along with 4 hybrid varieties

# Bordeaux Encépagement

- ✦ **Médoc and Graves:**
  - ✦ 75% Cabernet Sauvignon.
  - ✦ 20% Merlot and minor varieties.
- ✦ **Saint-Émilion and satellites:**
  - ✦ 60% Merlot, 30% Cabernet Franc.
  - ✦ 10% Cabernet Sauvignon.
- ✦ **Pomerol:**
  - ✦ Predominantly Merlot.
- ✦ **Entre Deux Mers:**
  - ✦ Predominantly Sauvignon Blanc.

# Médoc



# Médoc

- ✦ Largest appellation in Bordeaux.
- ✦ Originally marshlands drained in the 17<sup>th</sup> century by Dutch engineers.
- ✦ Two sub-appellations:
  - ✦ Haut Médoc
  - ✦ Médoc
- ✦ Red wines predominate.
- ✦ Home to many prestigious châteaux.

# Médoc Classification (1855)

- Ranked 61 properties in the Médoc. (one in the Graves)
- Commissioned by Emperor Napoleon III for the Universal Exhibition in Paris.
- Wines rated by price and categorized into 5 growths:

1 <sup>er</sup> Crus	5
2 <sup>ème</sup> Crus	14
3 <sup>ème</sup> Crus	14
4 <sup>ème</sup> Crus	10
5 <sup>ème</sup> Crus	18

- One major change in 1973: Château Mouton-Rothschild was promoted from 2<sup>ème</sup> to 1<sup>er</sup> Cru.
- Graves** (except Haut-Brion) and **Saint-Émilion** are not included.

# FRANCE - MÉDOC

Médoc

Saint-Estèphe

Pauillac

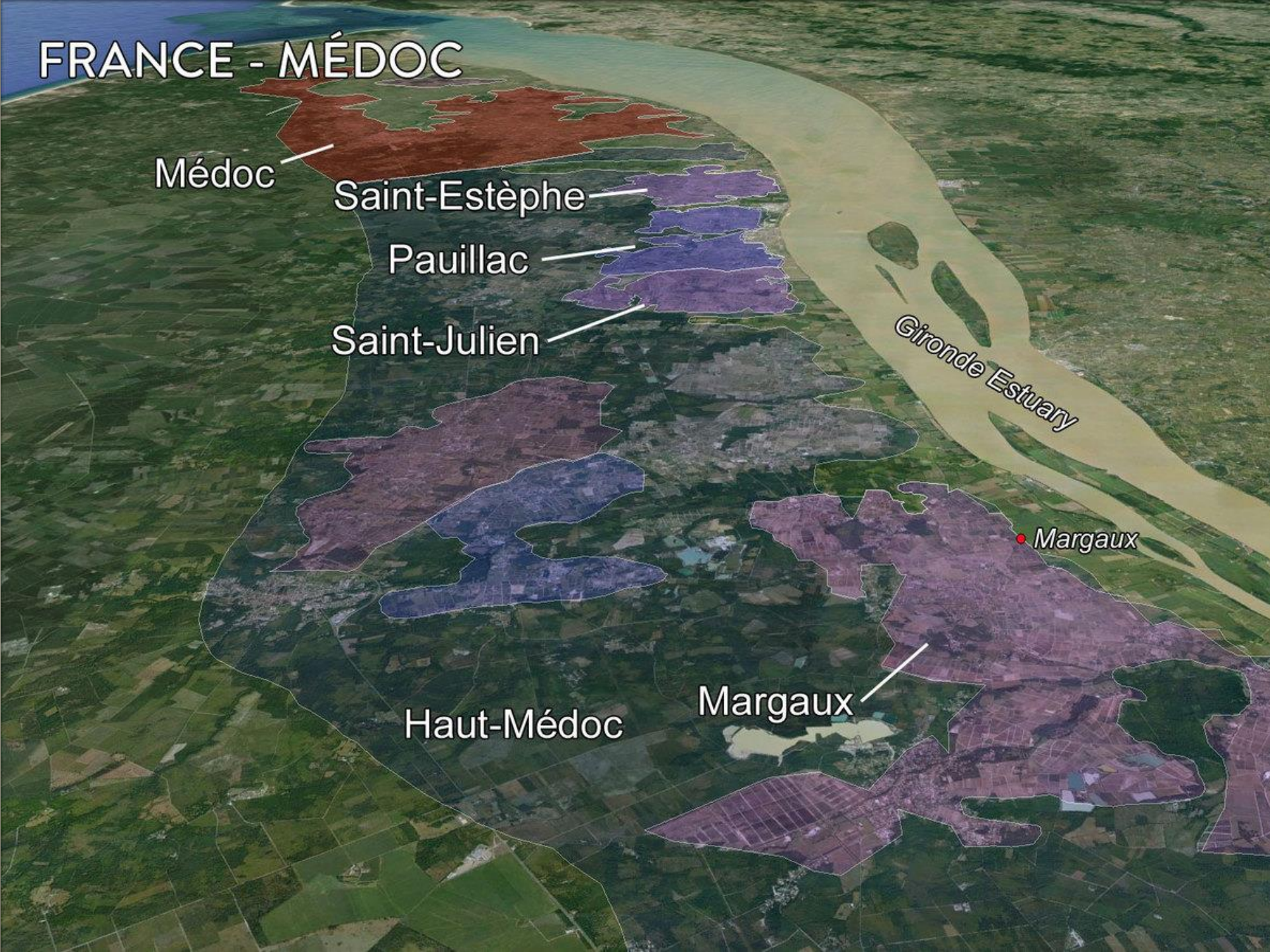
Saint-Julien

Gironde Estuary

Margaux

Haut-Médoc

Margaux



# Haut Médoc and Saint-Estèphe

- ✦ **Haut Médoc:** 4,198ha
  - ✦ Appellation and area containing the six commune appellations and most of the classified growth châteaux.
  - ✦ 5 Classified growths
- ✦ **Saint-Estèphe:** 1,250ha.
  - ✦ Northern most commune.
  - ✦ Wines are generally sturdy, full-bodied, and age-worthy.
  - ✦ Five classified growths including the 2nd Growths Châteaux.
    - ✦ Château Cos d'Estournel
    - ✦ Château Montrose



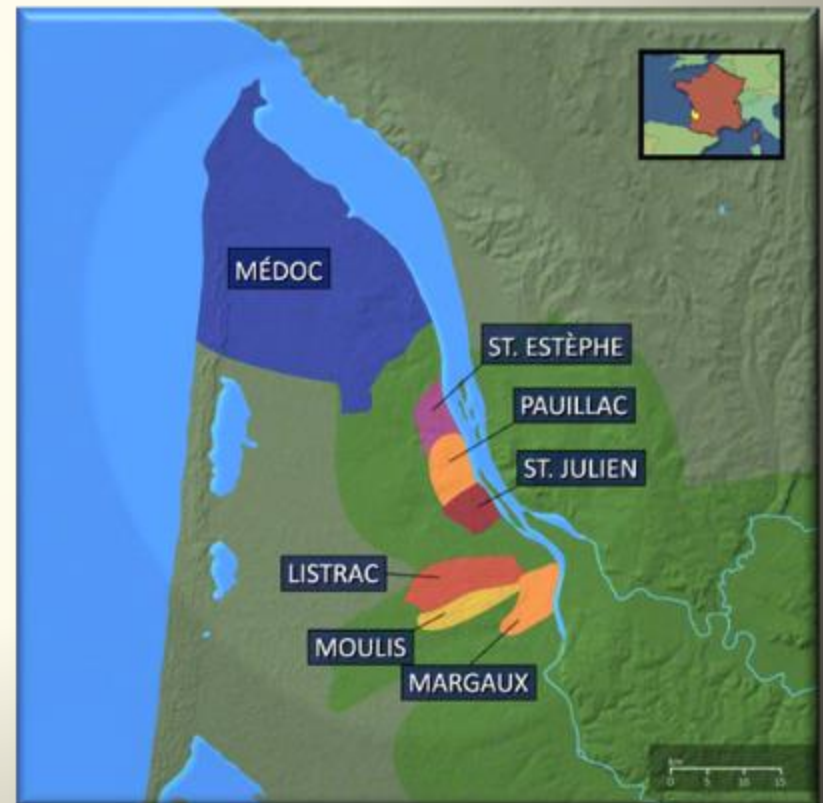
## Pauillac: 1,213ha

- Considered to be the epitomé of “claret.”
- Wines balance power and finesse.
- Number of classified growths.
- Three 1st Growths:
  - Château Latour
  - Château Lafite-Rothschild
  - Château Mouton-Rothschild



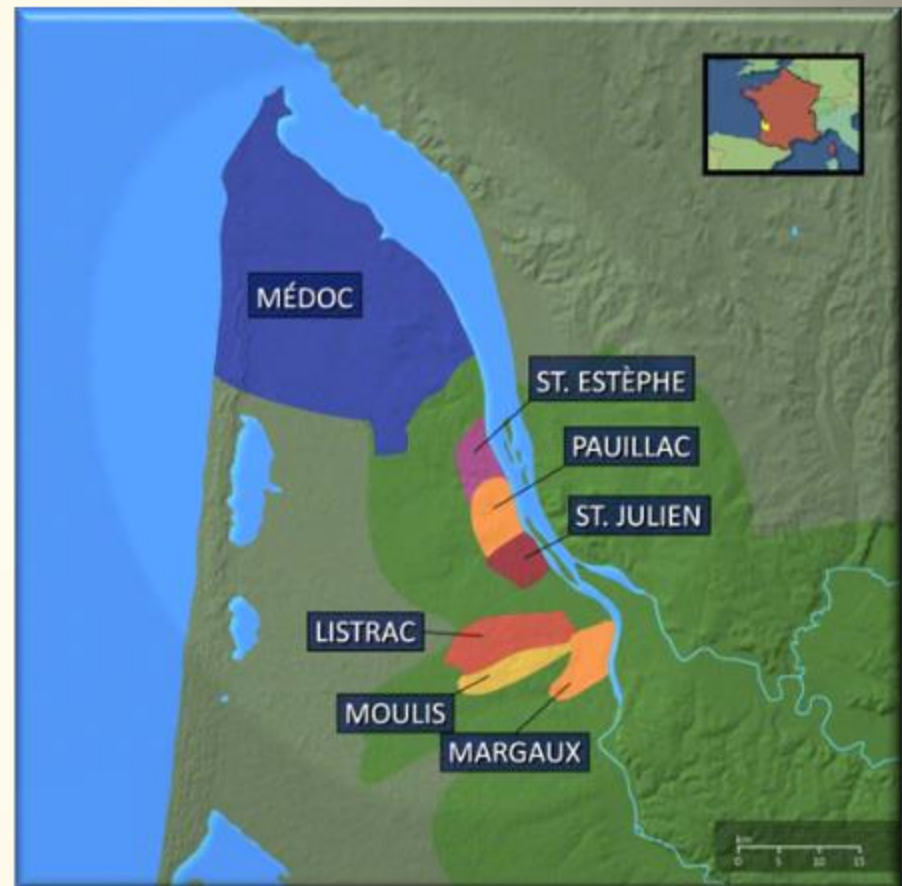
# Saint-Julien: 910ha.

- Smallest commune but largest % of classified growths. (11)
- Style combines elegance of Pauillac with sturdiness of St.- Estèphe.
- Five 2nd Growths:
  - Château Ducru Beaucaillou
  - Château Léoville-Las-Cases
  - Château Léoville-Poyferré
  - Château Léoville-Barton
  - Château Gruaud-Larose



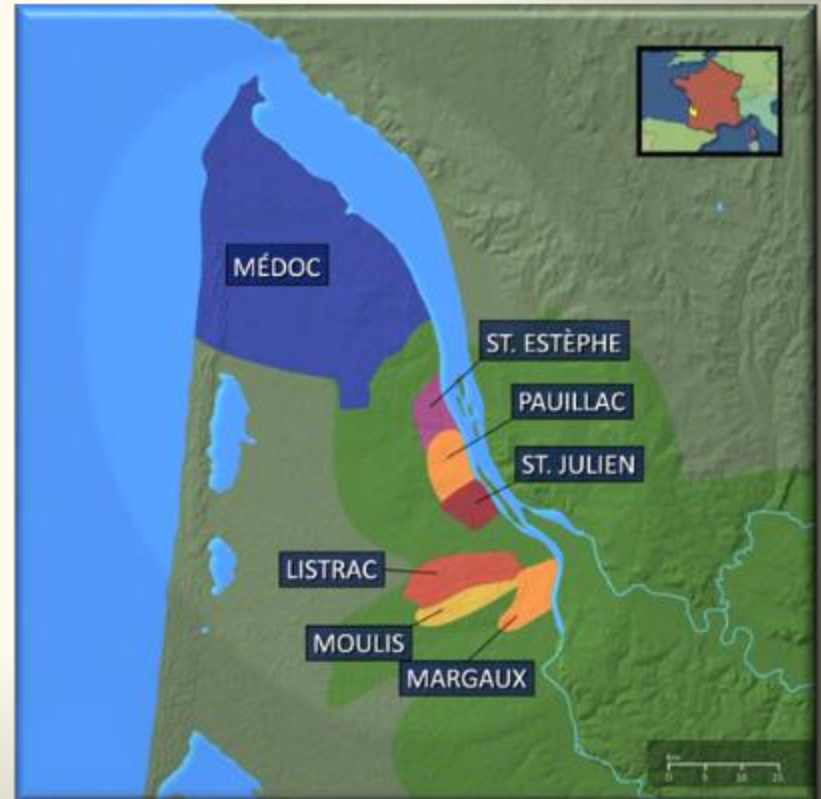
# Listrac and Moulis

- ✦ Lesser appellations.
- ✦ No classified growths.
- ✦ Some excellent values.
  - ✦ **Listrac:** 733ha.
    - ✦ Château Fourcas-Hosten
    - ✦ Château Fourcas-Dupré
    - ✦ Château Clarke
  - ✦ **Moulis:** 730ha.
    - ✦ Château Chasse-Spleen
    - ✦ Château Poujeaux



# Margaux: 1500ha.

- ▶ Largest commune in the Haut- Médoc.
- ▶ Lower percentage of classified growths.
- ▶ Wines known for their elegance and finesse.
- ▶ One 1st Growth:
  - Château Margaux
- ▶ Other notable wines:
  - Château Palmer
  - Château Giscours
  - Château Brane-Cantenac



## 2006 Médoc Artisans Classification

- Official recognition in 2006
- Family businesses that cultivate grapes, make and sell their wines.
- 44 estates mainly in Médoc & Haut Médoc.
- Classification to be renewed every 10 years.

## Médoc Blanc

- From 2023 AOP Médoc to include white wines.
- **Principal Grapes:** Sémillon, Sauvignon Blanc, Sauvignon Gris & Muscadelle.
- Additionally – Chardonnay, Gros & Petit Manseng, Viognier and Chenin blanc can be used along with up to 10% of Hybrid grapes in the assemblage.
- A minimum of 30% of the assemblage to be oak aged.

## Graves & Pessac-Léognan: 5,300ha

- ✦ Appellation for red and dry white wines.
- ✦ Châteaux classified in 1953, reviewed in 1959 with separate lists for red and white.
- ✦ No ranking - all may call themselves Cru Classé.
- ✦ Château Haut-Brion is included although it retains 1855 classification.
- ✦ Pessac-Léognan AOP was created in 1987 in the north of the Graves district.

# FRANCE - GRAVES / PESSAC-LÉOGNAN



Dordogne River

• Bordeaux

Pessac-Léognan

Graves

Ciron River

• Sauternes

Sauternes

Garonne River

# Sauternes and Barsac



# Sauternes: 1,767ha.

- ▶ World famous botrytis dessert wines.
- ▶ **Grape varieties:**
  - ▶ Sémillon Blanc
  - ▶ Sauvignon Blanc
  - ▶ Muscadelle Blanc
- ▶ Some dry wines also produced and labelled Graves Blanc.



# Botrytis - Pourriture Noble

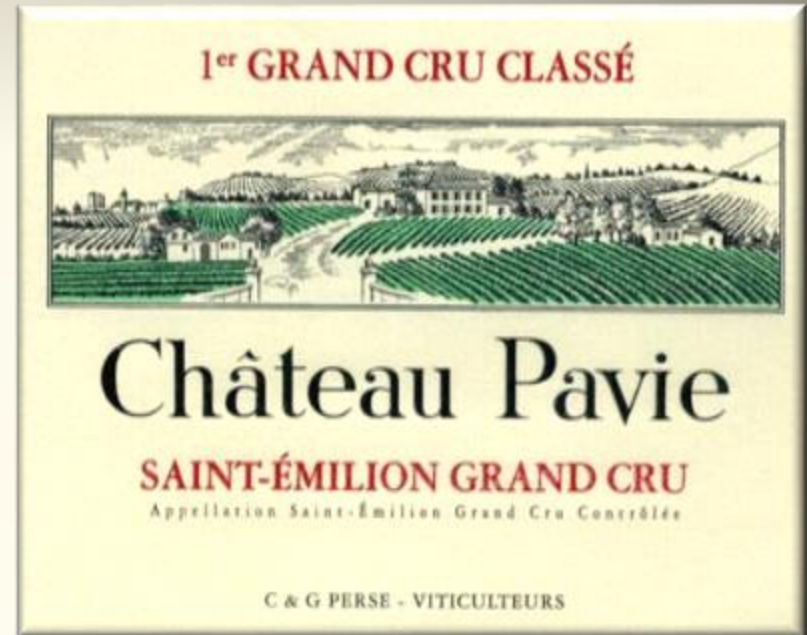
- ✦ Fungus that develops under humid conditions.
  - ✦ Dehydrates the grapes.
  - ✦ Concentrates sugars.
  - ✦ Changes flavour profile.
- ✦ Does not develop uniformly.
- ✦ Several *tries*, or trips, through vineyard are required to complete harvest.



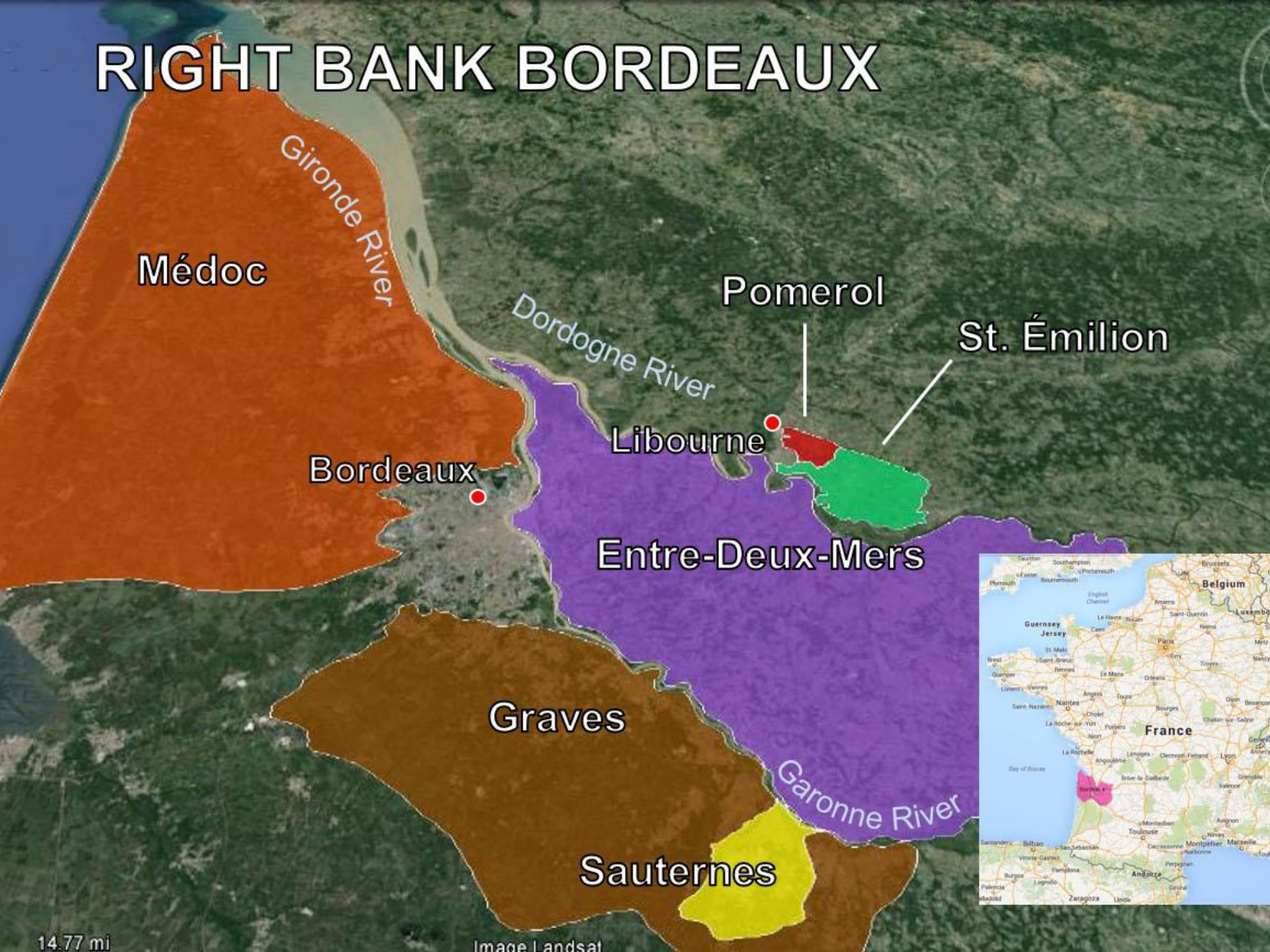


# Saint-Émilion

5,311ha



# RIGHT BANK BORDEAUX



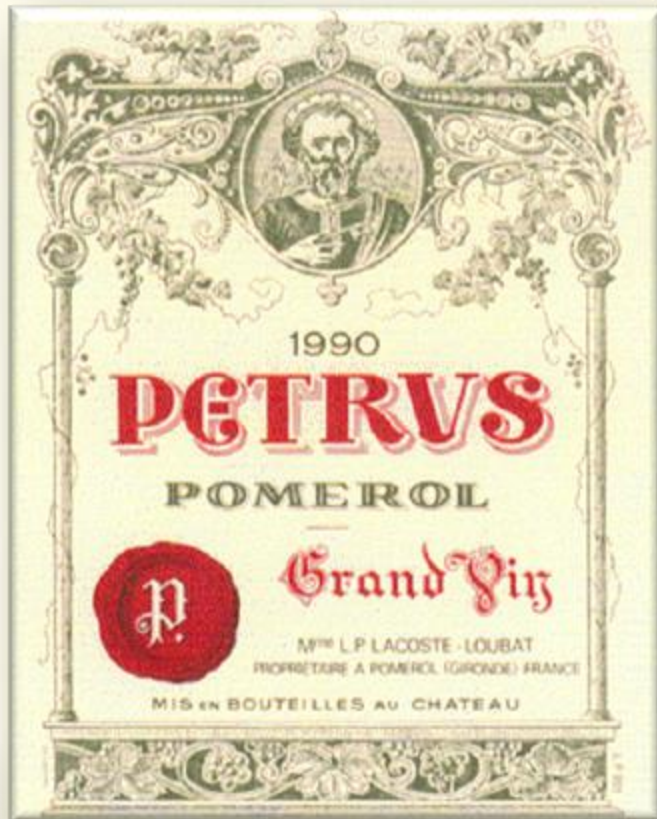
14.77 mi

Image Landsat

# Saint-Émilion: Classifications

- ✦ Created 1955, reviewed in 1958, 1969, 1986, 1996, 2006, 2012, 2022
- ✦ Classification reviewed every 10 years to include promotions and demotions.
- ✦ Grand Cru has two divisions:
  - ✦ Saint-Émilion Premier Grand Cru Classé (14)
  - ✦ Saint-Émilion Grand Cru Classé (71)
- ✦ Only 2 Châteaux are designated as Premier Grand Cru Classé A
  - ✦ **Château Pavie, Château Figeac**
- ✦ The other 12 châteaux rated Classé B.
- ✦ **Château Ausone, Château Cheval-Blanc, and Château Angélus** previously Premier Grand Cru Classé A, and **Château Gaffelière** (Classé B) withdrew from the classification system in 2021/2.
- ✦ Independent organisation reviews 10 vintages (15 for promotion from GC Classé to Premiere GC Classé.)

# Pomerol



# Pomerol: 800ha

- ✦ Small properties with limited production.
- ✦ Area has never been classified.
- ✦ AOP for red wines only, typically 95% Merlot and 5% Cabernet Franc.
- ✦ **Principal Châteaux:**

Petrus	La Conseillante
La Fleur Petrus	Vieux Château Certan
Le Pin	Trotanoy

- ✦ Satellite district: Lalande-de-Pomerol.

CÔTES DE BORDEAUX

BLAYE

BOURG

FRONSAC

LALANDE-DE-  
POMEROL

POMEROL

ST. ÉMILION

PREMIÈRES-  
CÔTES

ENTRE-  
DEUX-MERS

LOUPIAC

STE-CROIX-  
DU-MONT

CADILLAC



**BORDEAUX**

Other Appellations

© Court of Master Sommeliers

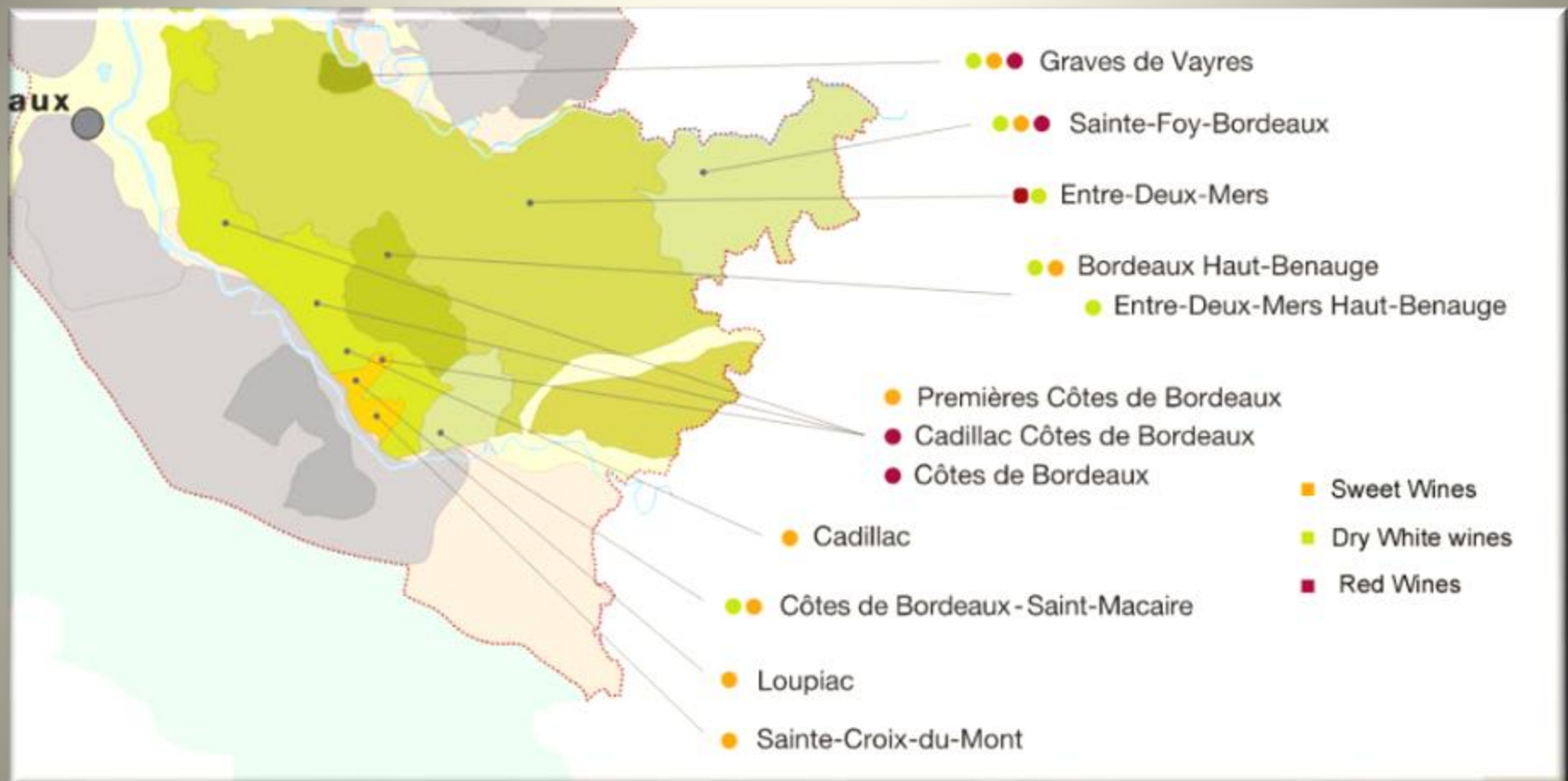
0 5 10 15  
km

# Côtes de Bordeaux

CÔTES DE BORDEAUX  


- ✦ One in ten bottles of Bordeaux sold. 990 producers.
- ✦ As of 2009 vintage, appellation to include
  - ✦ **Blaye Côtes de Bordeaux:** (Red/White)
  - ✦ **Francs Côtes de Bordeaux:** (Red/White)
  - ✦ **Castillon Côtes de Bordeaux:** (Red/White)
  - ✦ **Cadillac Côtes de Bordeaux:** (Red)
  - ✦ Includes St Croix du Mont and Loupiac (Red)
- ✦ **Other AOP's**
  - ✦ Bourg/Côtes de Bourg (Red/White)
  - ✦ Cadillac (Sweet)
  - ✦ Graves de Vayres (Red/White)
  - ✦ Bordeaux St. Foy (Red/White)(borders with Bergerac)
  - ✦ St Macaire (Sweet)
  - ✦ Premières Côtes de Bordeaux (Sweet wines)

# Entre Deux Mers



# Notable Vintages

2000

2005

2009

2010

2014

2015

2016

2018

2019

2022